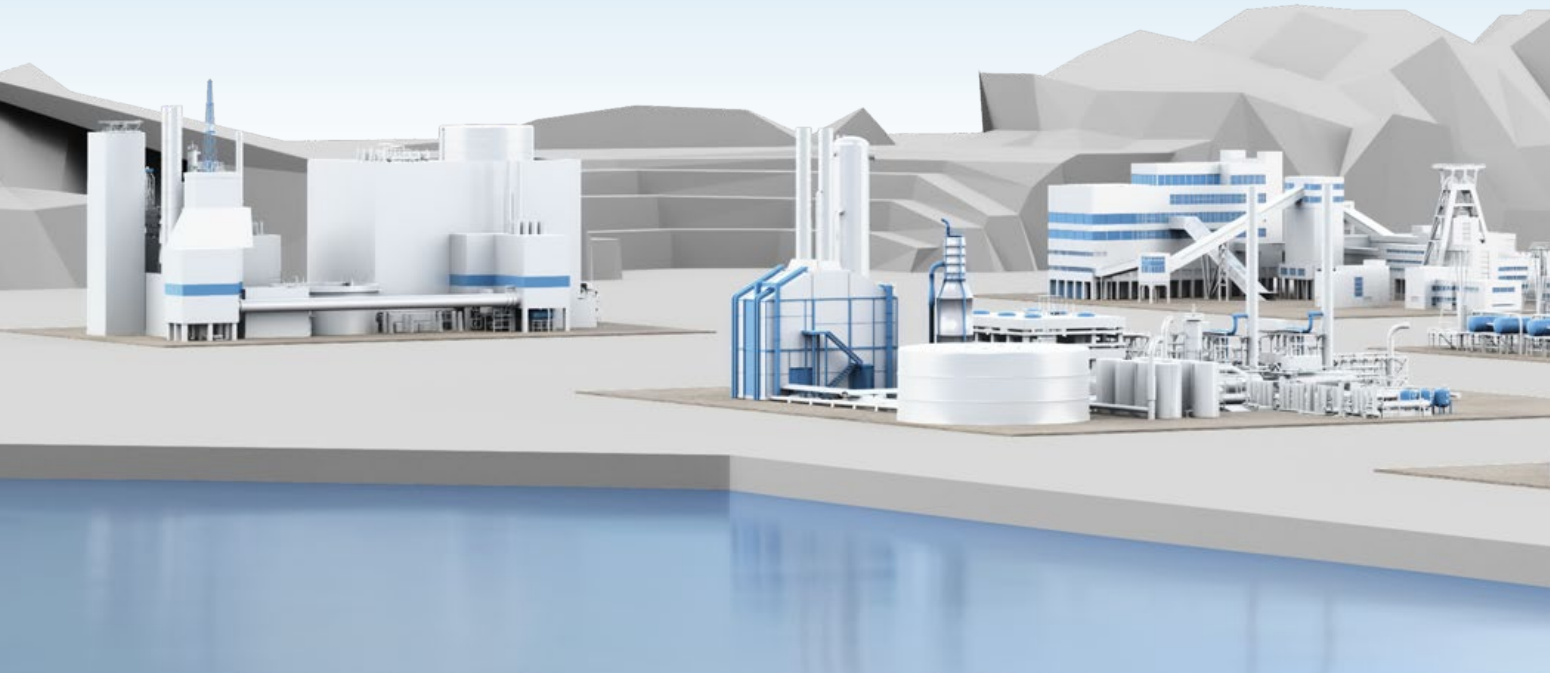


# Applications for Roxtec transits in process industries



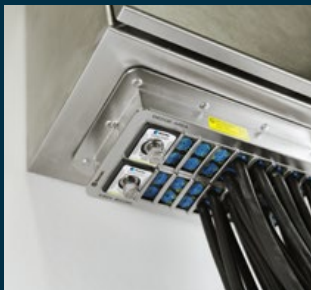
# Roxtec sealing solutions for process industries

Explore the multitude of applications where you can benefit from our solutions.



## Cabinets & enclosures

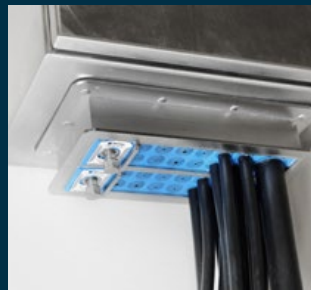
Roxtec cable entry solutions are ideal for field-based terminal boxes, electric heat trace cabinets, remote I/O cabinets, DCS/PLC cabinets and other high cable density applications in harsh environments. Use our seals to meet international safety requirements and to be prepared for changes in cable schedules or for additional cables of varying sizes.



**Field-based terminal boxes**



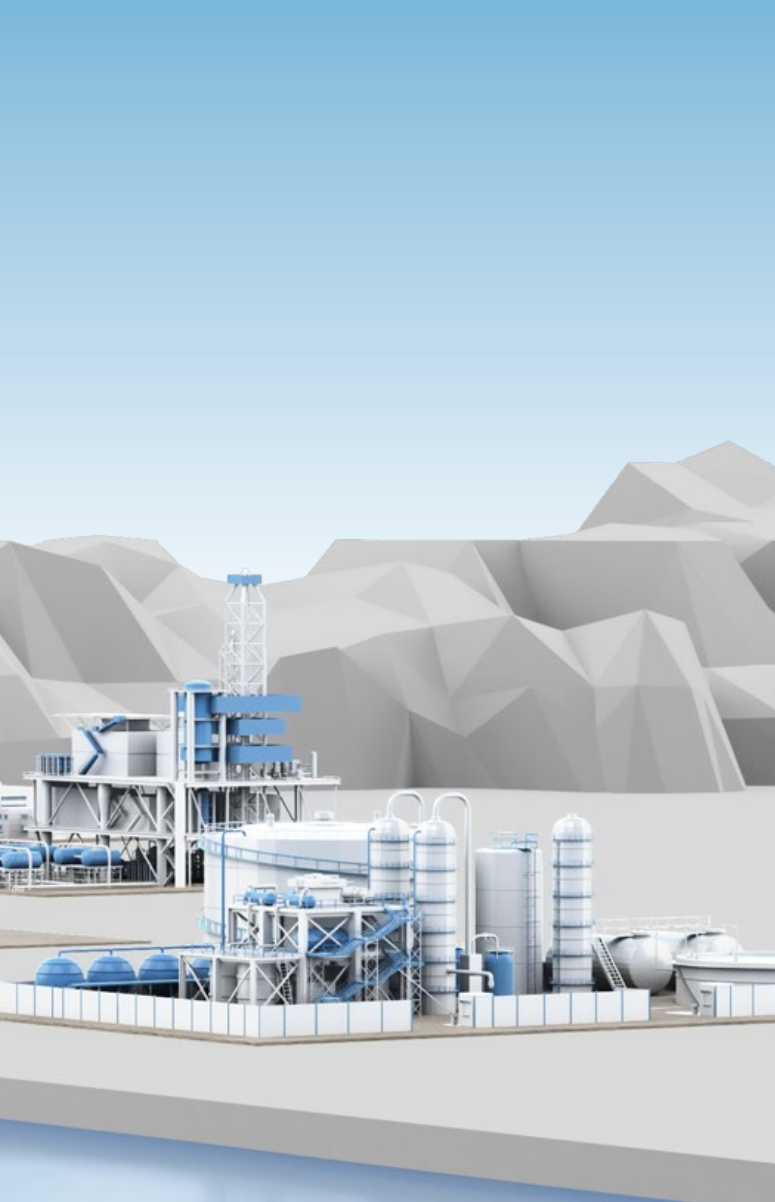
**Electric heat trace cabinets**



**Remote I/O cabinets**



**DCS/PLC cabinets**



## Why use Roxtec?

- One opening for multiple cables and pipes
- Flexibility for cables and pipes of different sizes
- Built-in spare capacity for upgrades and retrofits
- Global certifications and standards
- Time-savings in design, installation and maintenance

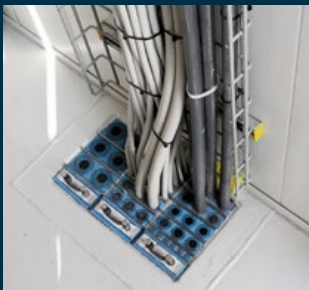
## One solution for multiple risks

- Ingress protection
- Rodent barrier
- Electrical safety
- Firestop
- Gas-tight, vapor-tight
- Blast protection

[roxtec.com/processindustries](http://roxtec.com/processindustries)

## Buildings – modular and built on site

Roxtec sealing solutions are ideal when multiple cables and pipes of different types and sizes enter walls, floors, roofs or underground in motor control centers, substations, E-houses, field auxiliary rooms, control rooms and other high cable density applications. The seals meet international safety ratings and are designed to withstand harsh environments. Use our solutions to ensure protection, save space, simplify design and speed up installation.



Motor control centers



Substations



E-houses



Control rooms



# Sealing solutions for multiple demands

Standardize with Roxtec cable and pipe entry seals to optimize efficiency and save engineering hours in specific processing projects as well as in entire mega-projects. Our flexible and reliable system covers many risks to protect buildings, substations and enclosures. It is approved for use in hazardous locations and harsh environments.

Find your transit on [www.roxtec.com](http://www.roxtec.com)

We are present worldwide as well as online to provide the best possible service and support. We recommend you to visit [roxtec.com](http://roxtec.com) where you can find certified cable and pipe transit solutions for more than 100 applications and benefit from the easy search functions for both sealing solutions and certificates. You can also simplify your daily work by using the free, online tool Roxtec Transit Designer™.

You are always welcome to contact us with any questions and requests.