

# Applications for Roxtec seals in solar power plants



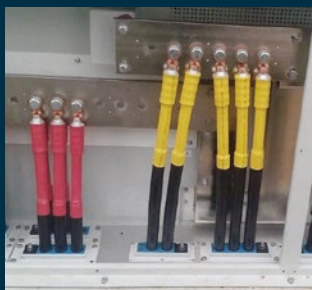
# Roxtec sealing solutions for the solar power industry

Explore the multitude of applications where you can benefit from our solutions.



## Cabinets & enclosures

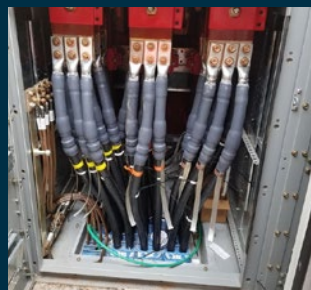
Roxtec's area efficient seals are ideal for entries to combiner boxes, central inverters, string inverters, transformers, switchgear and other cabinet applications with high cable density. Protect your equipment by an organized cable entry that is also openable to simplify maintenance and sudden changes.



1. Combiner boxes/  
string inverters



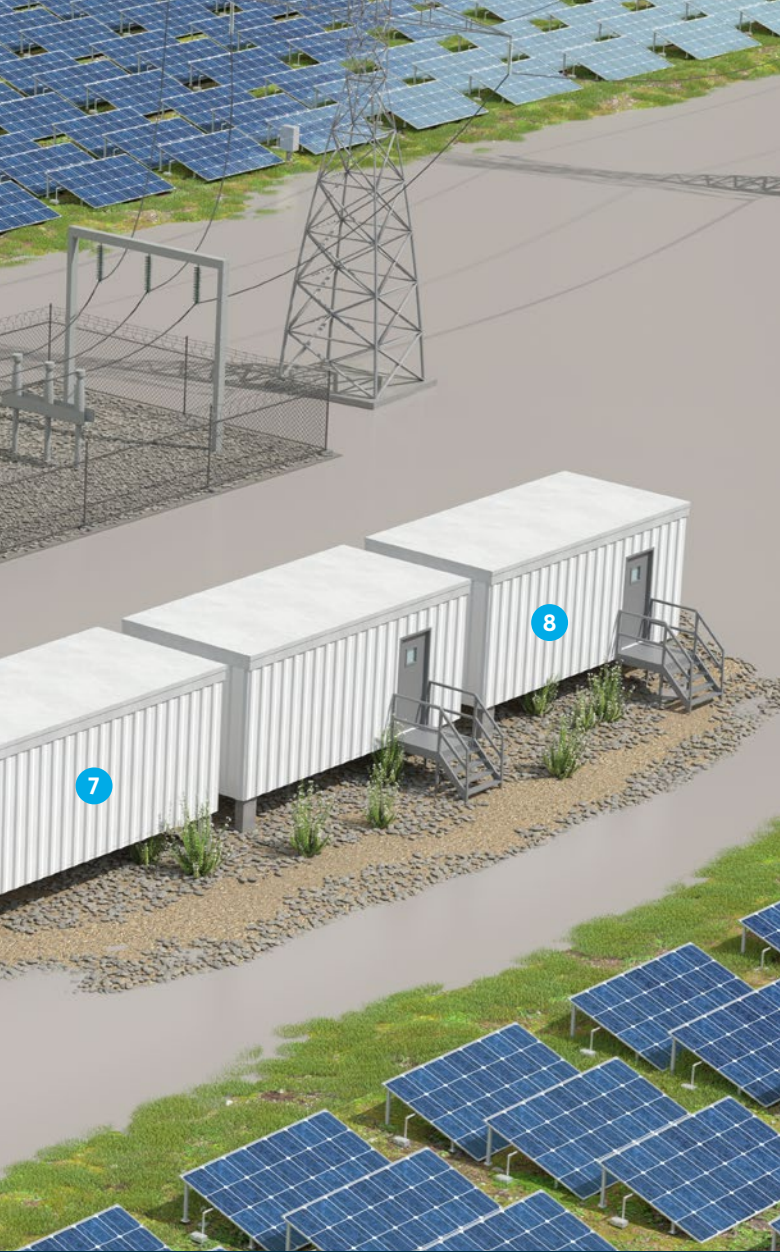
2. Central inverters



3. Switchgear



4. Substation equipment/  
transformers



## Why use Roxtec?

- Animal mitigation
- Watertight
- Firestop
- Gas-tight, dust-tight
- Bonding, grounding and EMI protection
- Cable retention

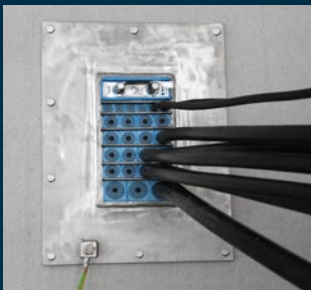
## Superior simplicity

- One cut-out for dozens of pre-terminated cables
- Flexibility for cables and pipes of different sizes
- Built-in spare capacity for future cables and pipes
- Installation in wet conditions and running water

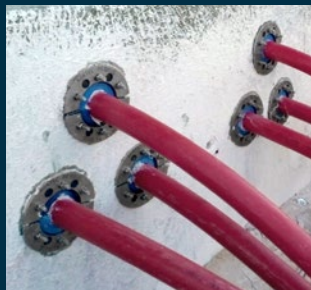
[roxtec.com/solarpower](https://roxtec.com/solarpower)

## Buildings & kiosks

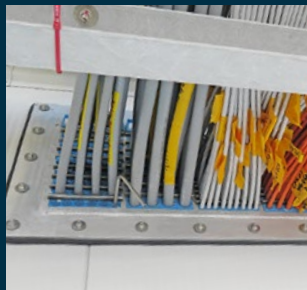
Roxtec cable and pipe seals work efficiently in underground and above ground walls and floors in buildings, technical shelters and kiosks. Avoid water, humidity and animal issues in your buildings and kiosks.



5. Control buildings



6. Electrical kiosks



7. Technical shelters



8. Energy storage



# Protect equipment and secure operations

Use Roxtec cable and pipe seals to minimize the risk of downtime caused by animals, water and dust. Install them in combiner boxes, central inverters, string inverters, transformers, sub-station enclosures and switchgear, as well as in equipment kiosks and control buildings. Roxtec seals are extremely space efficient and can be used on new or retrofit applications. Built-in spare capacity enables installers to quickly add cables without having to cut or punch new holes in the equipment.

Find your transit on [www.roxtec.com](http://www.roxtec.com)

We are present worldwide as well as online to provide the best possible service and support. We recommend you to visit [roxtec.com](http://roxtec.com) where you can find certified cable and pipe transit solutions for more than 100 applications and benefit from the easy search functions for both sealing solutions and certificates. You can also simplify your daily work by using the free, online tool Roxtec Transit Designer™.

You are always welcome to contact us with any questions and requests.